



# **Join the Patient Mission**

## Company Presentation

*July 2022*

# Cautionary note regarding forward-looking statements

These slides and the accompanying oral presentation may contain “forward-looking statements”. These statements include, but are not limited to: statements about our plans, strategies, timelines and expectations with respect to the development, manufacture or sale of our product candidates, including the design, initiation, enrollment and completion of pre-clinical and clinical studies; timelines for the results of ongoing and planned clinical trials for our product candidates and for ABECMA (ide-cel) in additional indications; the timing or likelihood of regulatory filings and acceptances and approvals thereof; expectations as to the market size for ABECMA and any other approved product we may successfully develop; the progress and results of our commercialization of ABECMA, including our goal of increasing manufacturing capacity and improving the manufacturing process and the number of patients that are expected to be treated with ABECMA in the commercial setting and potential late line global revenue for ABECMA; anticipated revenues resulting from sales of ABECMA; statements about the efficacy and perceived therapeutic benefits of our product candidates and the potential indications and market opportunities therefor; statements about the strategic plans for 2seventy bio and potential corporate development opportunities, including manufacturing expectations and benefits received from collaborations; statements about our ability to operate as a stand-alone company and execute our strategic priorities; and expectations regarding our use of capital, expenses and other future financial results, including our net cash spend and U.S. net revenue for ABECMA in 2022. Any forward-looking statements in this presentation are based on management’s current expectations and beliefs and are subject to a number of risks, uncertainties and important factors that may cause actual events or results to differ materially from those expressed or implied by any forward-looking statements contained in this press release, including, without limitation, the risk that the market opportunities for our approved product or any future approved product are smaller than we believe they are; the risk that BMS, upon whom we rely for the successful development and commercialization of ABECMA does not devote sufficient resources thereto, is unsuccessful in its efforts, or chooses to terminate its agreements with us; the risk that we and/or BMS will be unable to increase manufacturing and supply capacity for ABECMA; the risk that our BLAs and INDs will not be accepted for filing by the FDA on the timeline that we expect, or at all; the risk that our plans with respect to the preclinical and clinical development and regulatory approval of our product candidates may not be successfully achieved on the planned timeline, or at all; the risk that ABECMA will not be as commercially successful as we may anticipate; and the risk that we are unable to manage our operating expenses or cash use for operations. For a discussion of other risks and uncertainties, and other important factors, any of which could cause our actual results to differ from those contained in the forward-looking statements, see the section entitled “Risk Factors” in the information statement contained in our Registration Statement on Form 10, as supplemented and/or modified by our most recent Quarterly Report on Form 10-Q and any other filings that we have made or will make with the Securities and Exchange Commission in the future. All information in this press release is as of the date of the release, and 2seventy bio undertakes no duty to update this information unless required by law. This presentation has been prepared by 2seventy bio, Inc., a Delaware corporation, (together with its subsidiaries, the “Company”) for the exclusive use of the party to whom the Company delivers this presentation. This presentation does not constitute an offer to sell or the solicitation of an offer to buy any securities of the Company. The information contained herein is for informational purpose, and may not be relied upon in connection with the purchase or sale of any security. Neither the Company nor any of its affiliates or representatives makes any representation or warranty, expressed or implied, as to the accuracy or completeness of this presentation or any of the information contained herein, or any other written or oral communication transmitted or made available to the you or your affiliates or representatives. The Company and its affiliates and representatives expressly disclaim to the fullest extent permitted by law any and all liability based, in whole or in part, on the presentation or any information contained herein or any other written or oral communication transmitted or made available to you or your affiliates or representatives, including, without limitation, with respect to errors therein or omissions therefrom. This presentation shall not constitute an offer to sell or the solicitation of an offer to buy any securities, nor shall there be any sale of any securities in any state or jurisdiction in which such offer, solicitation or sale would be unlawful prior to registration or qualification under the securities laws of any such state or jurisdiction.

# It's about time

The most committed and  
passionate geeks driving next gen  
oncology cell therapeutics



# Key “launch” ingredients and plans



## Product Engine Double Down

Science, translation, capabilities

## ABECMA®

Deliver to patients and scale to demand

## NextGen Potential Proof-of-Concept

Test, learn & iterate in the clinic

## Disrupt

Relentless innovation – science, medicine & manufacturing

# Horizons focused on long term learning and disruption



# 2022 Goals – Transformative build & deliver year

## Deliver ABECMA®

Anticipated \$250-\$300M  
US revenue  
in 2022

## Amp Up Product Engine

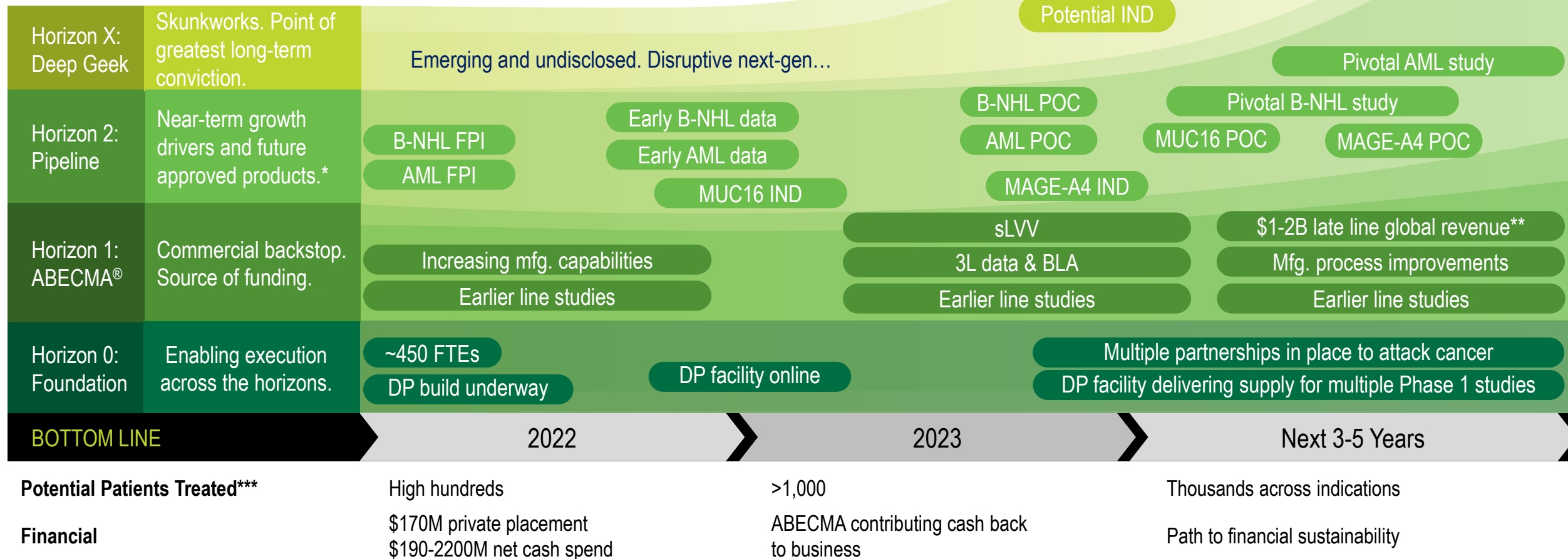
B-NHL & AML;  
advance in  
solid tumors

## Tune Burn + Capabilities

Anticipated \$190-220M net  
cash spend;  
goal to complete  
drug product facility build

Cash Runway into 2025

# Cash Runway into 2025 Carries Through Multiple Inflections



\*subject to FDA approval

\*\*based on management projections

\*\*\*across 2seventy portfolio

B-NHL: B-cell non-Hodgkin lymphoma; AML: acute myeloid leukemia;  
POC: Proof-of-Concept; IND: Investigational New Drug Application; DP: Drug Product

# ABECMA® expected to be \$1-2B late line global market opportunity

## 2021 Launch

- Approved on March 26, 2021
- Significant demand to date from patients and physicians
- Unaudited US product net revenue of approximately \$150M\*

## 2022 Outlook

- Anticipated \$250-300M US product net revenue; tracking to upper end of range
- Increasing capacity across supply chain; U.S. business will fully utilize capacity as it becomes available
- Growing body of clinical data from earlier line studies

## 2023 and Beyond

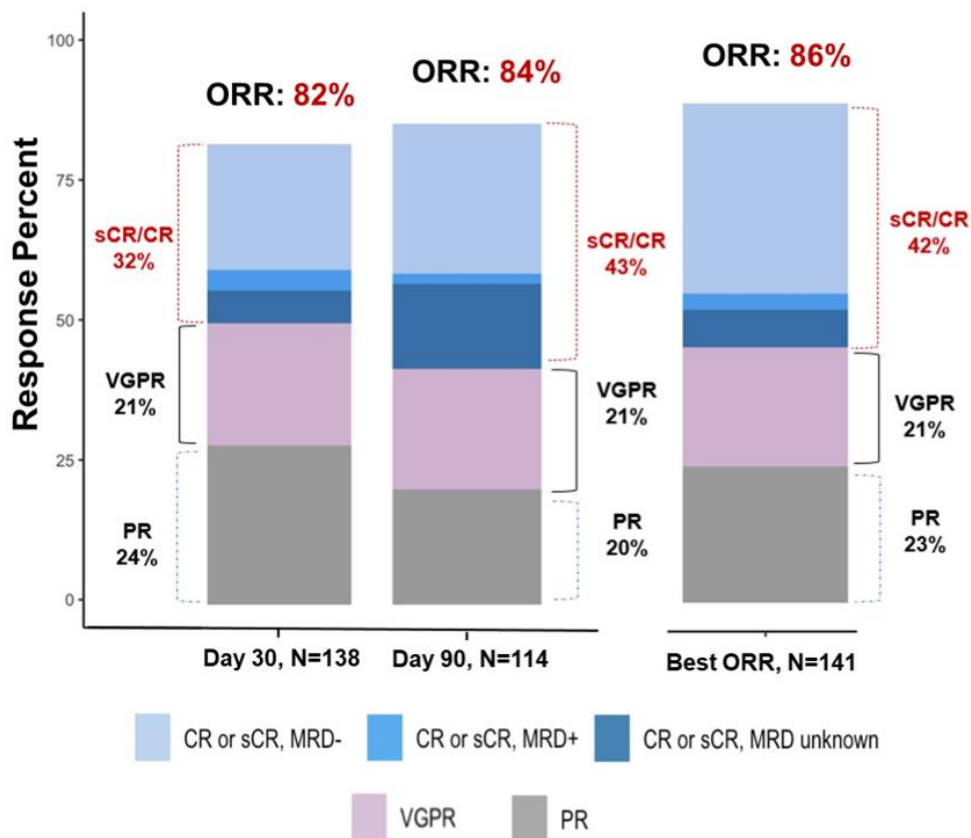
- 3L topline data and potential BLA submission
- Growing profitability
- Continued capacity expansion
- Next-gen development underway

Ongoing commercial learnings from ABECMA can benefit the 2seventy pipeline and provide financial backstop from a value and funding perspective



# ABECMA real world experience reinforces paradigm-changing efficacy

## Day 30, 90, and Best Overall Tumor Responses



- ASCO 2022 physician poster on real world experience at 11 sites: safety and efficacy in the real world is consistent with KarMMa study
- 77% of patients in real world study would not have met the eligibility criteria for KarMMa
- Very low rate of manufacturing failure (2.5%) in the real world\*
- KarMMa-2 data to be presented in 2H 2022; KarMMa-3 data in 2023

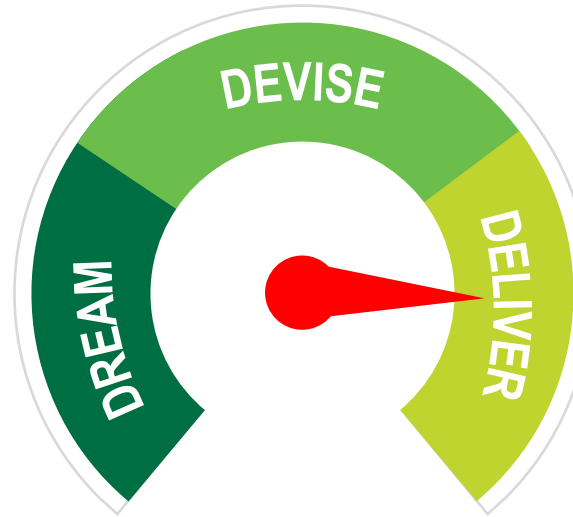
# 2seventy's R&D philosophy - accelerating innovation

Autologous CAR T cells work,  
but their full potential has not yet  
been realized

**Multiple approved** autologous CAR T products  
establish a powerful platform on which to build.

We have **yet to scratch the surface** with ways  
to embellish engineered T cells to truly capture  
the potential of cell therapy.

2seventy bio has the toolbox to do this  
**better than anyone.**

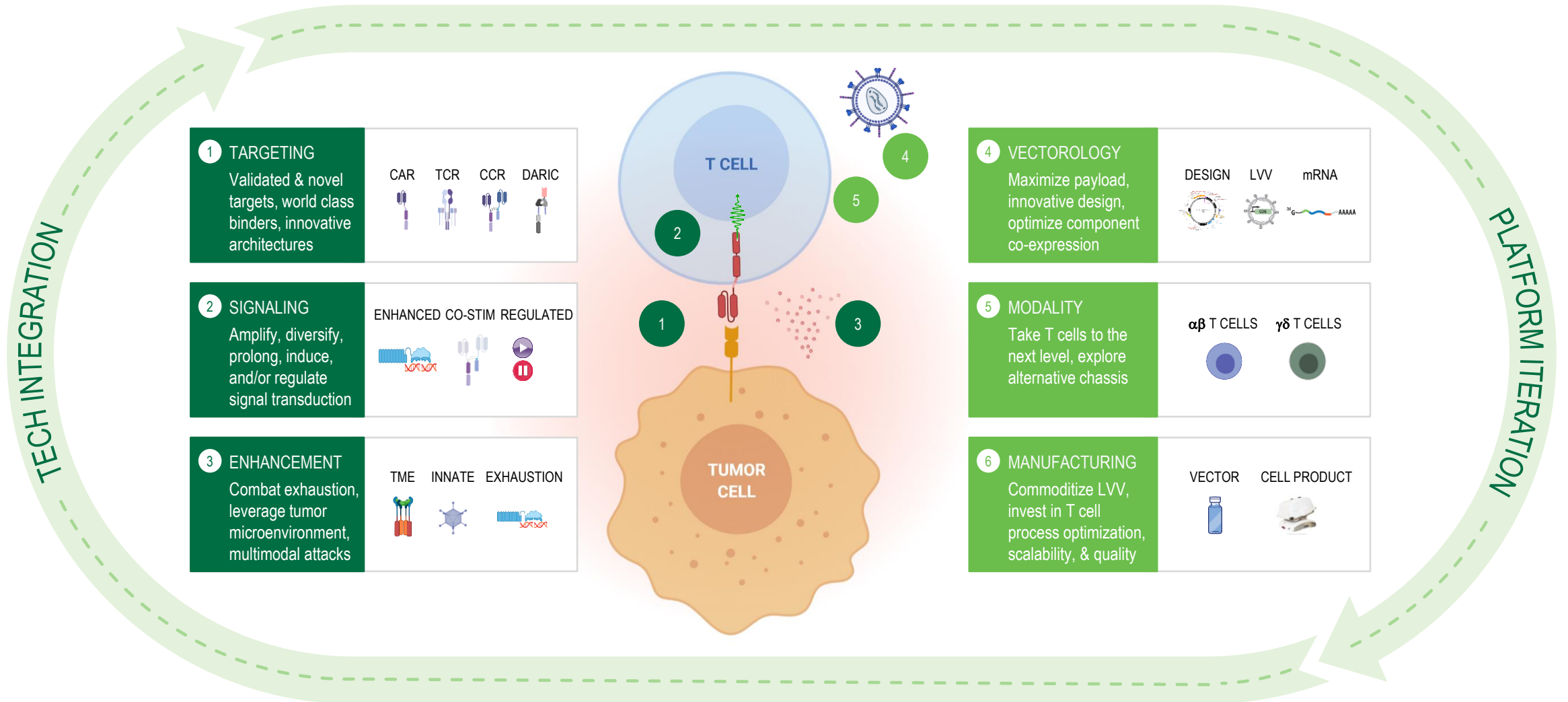


**Accelerate innovation  
through cycles of TSVT's  
ASK/ANSWER engine**



<b>DREAM</b>	<ul style="list-style-type: none"><li>• Identify fundamental problems</li><li>• Look beyond the horizon</li><li>• Explore new biology</li></ul>
<b>DEVISE</b>	<ul style="list-style-type: none"><li>• Define clear hypotheses</li><li>• Invent compelling solutions</li><li>• Bridge gaps through partnerships</li></ul>
<b>DELIVER</b>	<ul style="list-style-type: none"><li>• Define prospective data inflections</li><li>• Forge clear development path</li><li>• Invest in manufacturing 2.0</li></ul>

**Our mission is to develop sophisticated and tumor-tailored autologous CAR/TCR T cell products  
to realize the potential of personalized, cell-based oncology therapeutics.**

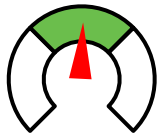
# R&D engine built to rapidly design, test, learn, & iterate



# Innovative cell therapy candidates across broad indications

INDICATION [DRUG]	TARGET	TECHNOLOGY	DISCOVERY STAGE R&D	IND-ENABLING PRECLINICAL STUDIES	CLINICAL STUDIES	APPROVED PRODUCTS	
Multiple Myeloma [ABECMA]	BCMA	CAR T cell	BMS Partnership 				
Multiple Myeloma [ABECMA]	BCMA	CAR T cell	BMS Partnership; Earlier-line Studies			Label Expansion	
AML-Pediatric [DARIC33]	CD33	Drug-Regulated CAR T cell (DARIC)	SCRI Collaboration			Phase 1 Open	
B-NHL [bbT369]	Dual B cell targets	Dual-Targeted CAR T cell Signal Enhanced Gene Edited	TSVT Owned			Phase 1 Open	
AML-Adult [DARIC33 Next-Gen]	CD33 + Undisclosed	Drug-Regulated CAR T cell Dual- Targeted Potency Enhanced	SCRI Collaboration				
Ovarian Cancer [bbT4015]	MUC16	CAR T cell Pharmacologic Enhancements	REGN Collaboration			2023 IND Submission	
Solid Tumors	MAGE-A4	TCR T cell Potency Enhanced	REGN / MEDG Collaboration			 Product engine generating ~1+ INDs per year	
Solid Tumors	Multiple	CAR / TCR T cell Potency Enhanced	Multiple				
Multiple Myeloma	Multiple	Multi-Targeted CAR T cell Potency Enhanced	TSVT Owned				
Additional Indications	Undisclosed	Multiple	Multiple; Including Collab. with Novo Nordisk				

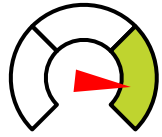
# bbT369: Designed with purpose. Study underway.



## DEVISE

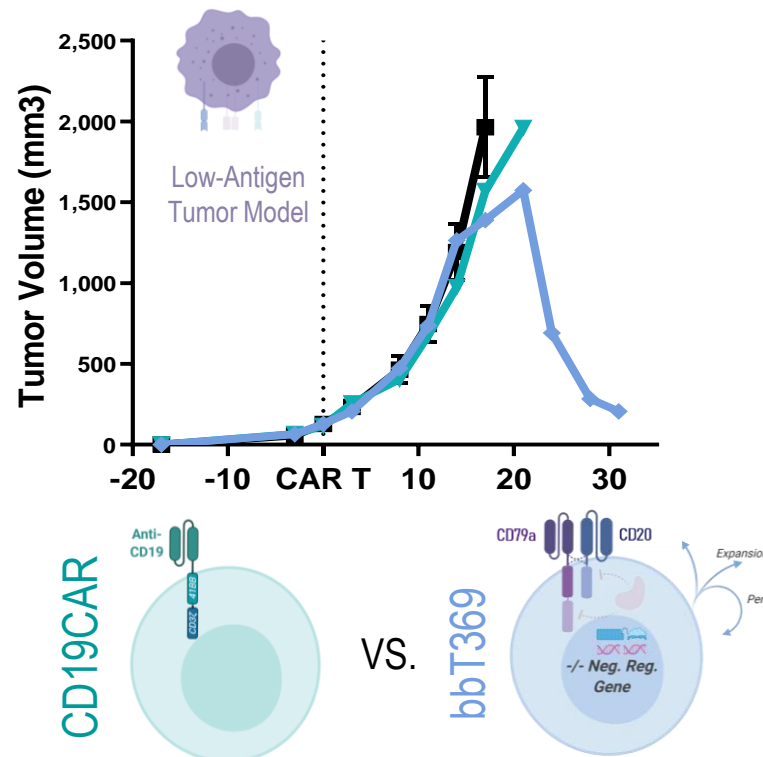
### How to get there:

- Devise a sophisticated and disruptive cell therapy: a dual-targeting, potency-enhanced candidate that could solve failure modes of CD19 CAR-Ts
  - Novel combination of antigens to address antigen escape.
  - Synergistic antigen receptor signaling domains to augment T cell activation.
  - Gene edit to enhance potency and reduce T cell exhaustion.



## bbT369 eliminates challenging tumors

### Execution

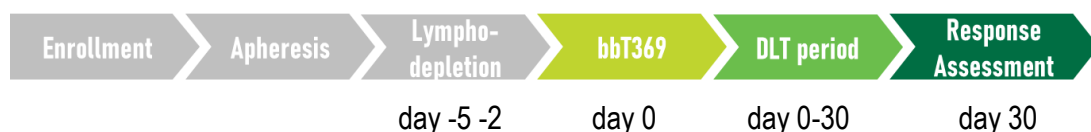


- bbT369 outperformed model CD19 CAR in challenging low antigen expressing tumors in vivo
- Data supports potential to overcome resistance and elongate durability of response
- Phase I trial permits both CD19 CAR relapsed and naïve patients
- Trial intended to be enriched for patients with high risk factors as a proving ground to demonstrate improved patient outcomes

Patients enrolled 1H 2022

# CRC-403 study in B-NHL open and enrolling

## CRC-403: A Phase 1/2 Study of bbT369 in Relapsed and/or Refractory B-Cell Non-Hodgkin Lymphoma (B-NHL)



### STUDY DESIGN

- Target enrollment: n=50
- 4 study sites
- Relapsed/Refractory B-cell NHL after autologous SCT or  $\geq 2$  prior lines of therapy
- B-cell NHL according to WHO 2017 classification
- Prior CD19 CAR-T therapy is permitted

## Key Questions / Features

### QUESTIONS

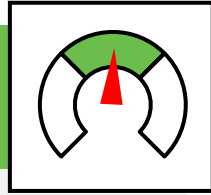
- Is the safety and tolerability of bbT369 in line with prior CAR Ts?
- Does bbT369 show anti-B cell activity in R/R B-NHL patients?
- Does bbT369 show deep and durable responses?
- Does the dual-targeting CAR architecture limit antigen escape?
- Do CBLB edited T cells expand and persist?

### FEATURES

- First in human application of 4 2seventy bio innovations:
  - Dual targeted T cell
  - Split-costimulation signaling architecture
  - MegaTAL gene editing tech
  - CBLB edited T cell
- All 4 are believed to have application across our research pipeline, including enhanced liquid tumor settings and solid tumors

# SC-DARIC33: Engineered to kickstart CAR T cell therapy in AML

## DEVISE

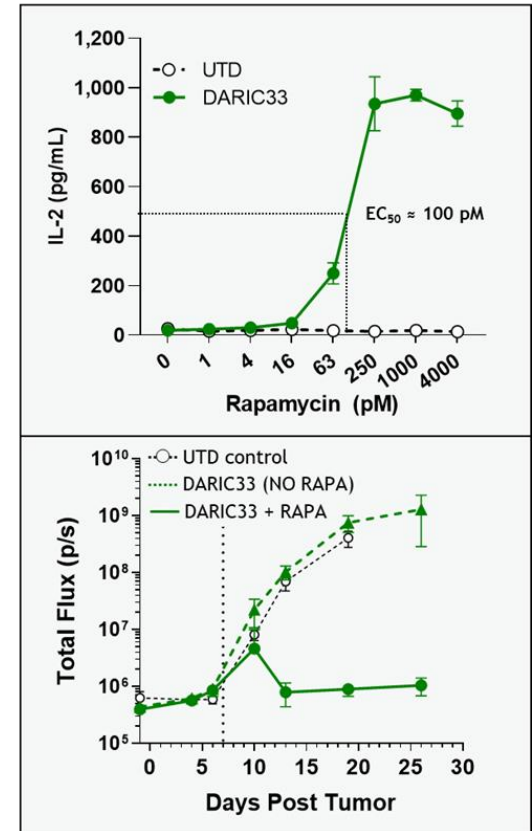
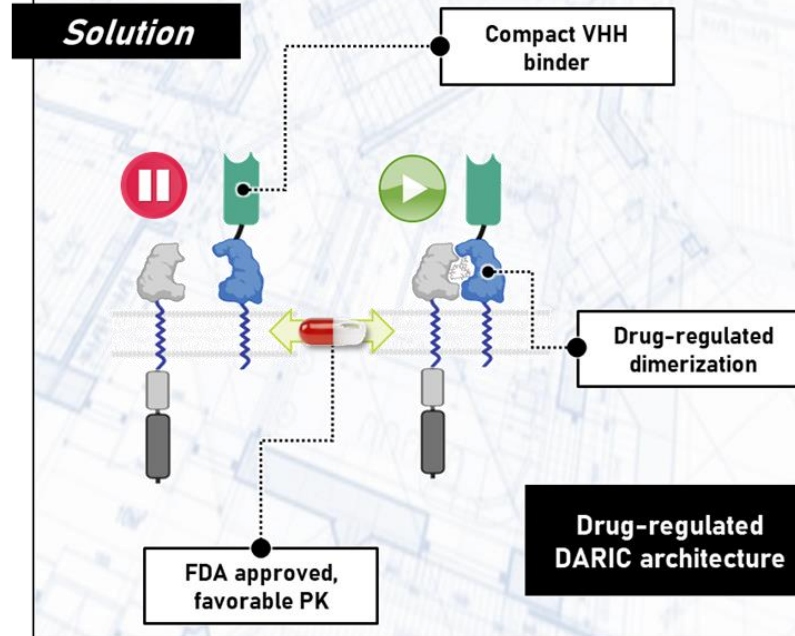


### How to get there:

- Drug regulated CAR Ts overcome the underlying aplasia risk of targeting myeloid cells
- Enhance CAR T cell persistence by reducing exhaustive effect of continuous antigen stimulation
- Targeting the C2 domain of CD33 designed to deliver target abundance across genotypes limiting antigen escape

A drug-controlled CAR T cell to enable sequential AML targeting & myeloid recovery

### Solution



Aggressively targeting AML requires pharmacologically-controlled CAR architecture that works under clinically feasible drug dosing



# Phase I study (PLAT-08) open and enrolling

## Study Design: A Study Of SC-DARIC33 In Pediatric And Young Adults With Relapsed Or Refractory CD33+ AML



### STUDY DESIGN

- Single-center, academic study
- Target enrollment: N=18
- Age  $\leq$  28 years
- Relapsed or refractory CD33+ AML
- Prior allogeneic stem cell transplant permitted
- Stem cell donor source identified

## Key Questions / Features

### QUESTIONS

- Do SC-DARIC33 T cells engraft & show activity vs CD33+ve cells?
- Is SC-DARIC33 safe and does it drive a clinical response?
- Can SC-DARIC33 deactivation enable myeloid recovery?

### FEATURES

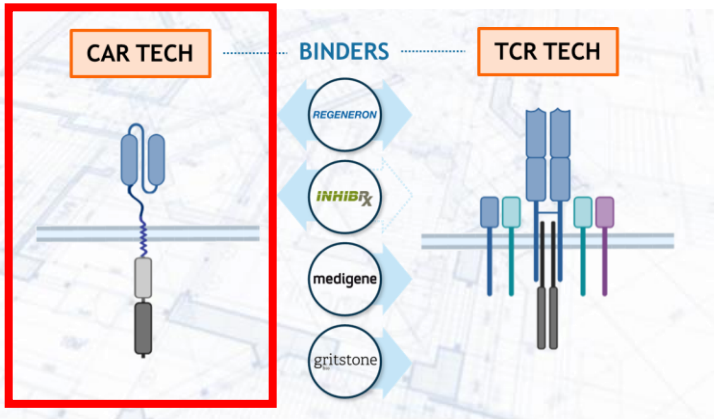
- First in human application of 2seventy bio's regulatable CAR T cell technology (DARIC)
- First application of a licensed INHIBRX VHH binder in CAR T format targeting a conserved domain of CD33
- Myeloid disease learnings
- Provides platform for NextGen multiplex CAR T cells
- Establishes CD33 targeting supporting other applications
- Potential DARIC technology extension to solid tumor targets



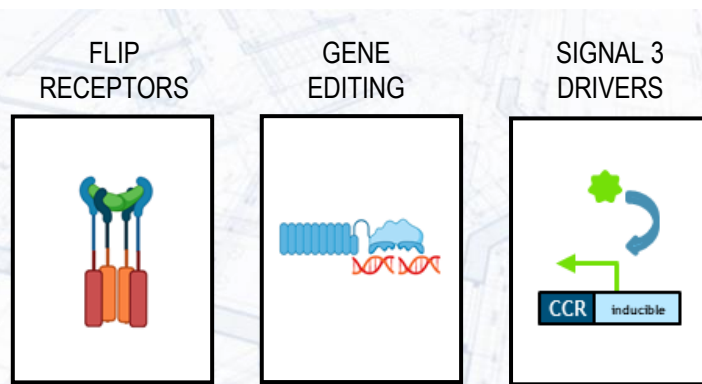
# 2seventy's attack on solid tumors designed to address the key barriers to success



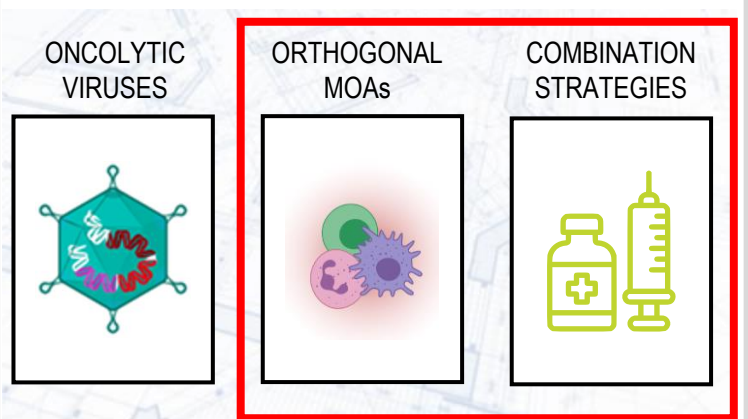
Can we achieve sensitive & multiplex targeting across the full range of target classes?



Can we convert suppressive signals to supportive ones, and re-engage innate immunity?



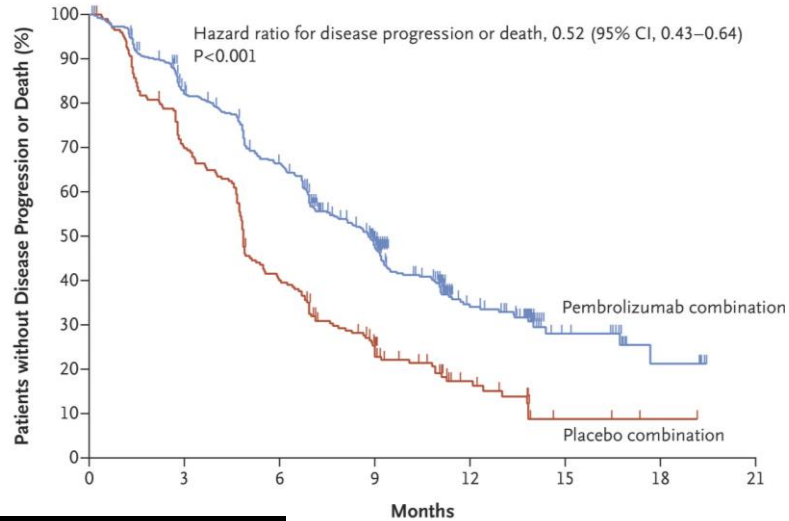
Can we disrupt the physical & biological barriers to T cell infiltration and inflammation?



# MAGEA4-CTBR12: Solid tumors



What if T cells can deliver heme cancer-like outcomes for patients?



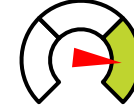
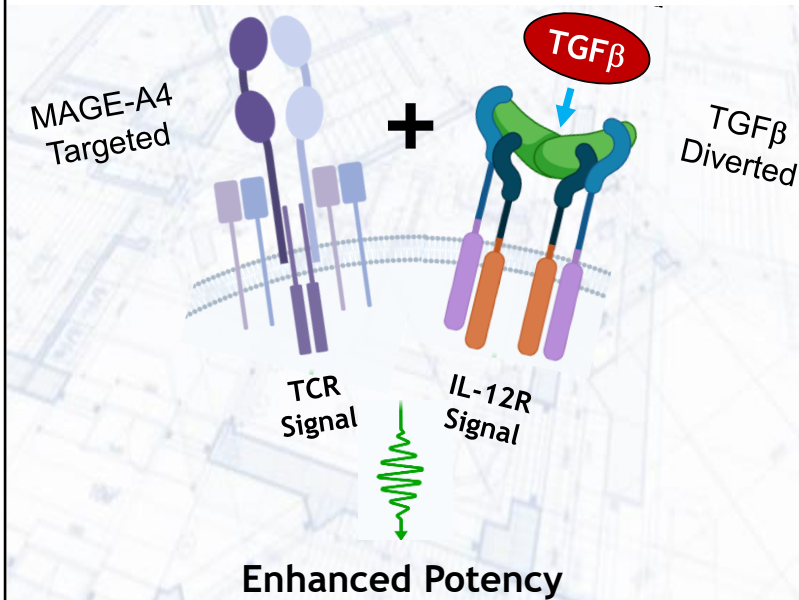
## Problem

- Limited ability to access deep responses
- Some profoundly immunosuppressive pathways are difficult to target systemically



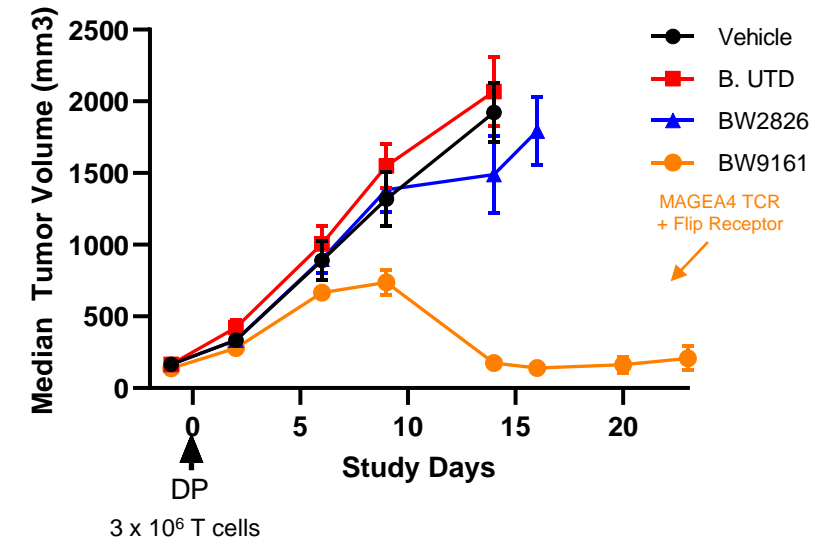
Can we substantially enhance the potency of a TCR T cell using a TME signal conversion technology?

We have engineered a potent MAGE-A4 TCR with a flip receptor to neutralize TGF $\beta$  and potentiate T cell activity



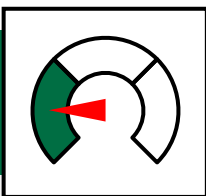
Lead integrated candidate selected, demonstrates signal conversion & potent tumor control

Tumor regression achieved with MAGEA4 TCR + TGF $\beta$  flip receptor in a melanoma xenograft model



# Our MUC16/ovarian cancer program aims to exploit CAR T + pharmaceutical combination strategies to unlock solid tumors

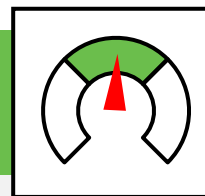
## DREAM



Strive to create a product that:

- Targets MUC16-positive solid tumors (expressed in ~80% of ovarian cancers)
- Unleashes the potential of T cells in solid tumors by synergizing with transformative pharmaceutical agents
- Addresses the challenges of the tumor microenvironment (TME), target heterogeneity and on target / off tumor activity

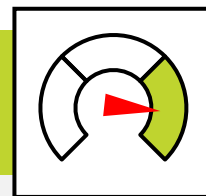
## DEVISE



How to get there:

- A bold product concept combining an engineered T cell and a potent pharmacologic agent:
  - CAR targeting a highly prevalent membrane-retained fragment of MUC16 (uses REGN binder)
  - A titratable pharmacologic agent to counteract the tumor microenvironment while mitigating off-tumor activity

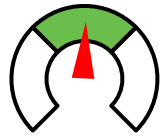
## DELIVER



Progress on execution:

- Encouraging pre-clinical data: T cells expressing MUC16-targeted CAR Ts clear tumors in a tumor rechallenge model
- Program being co-researched as part of TSVT-REGN strategic collaboration: leverage experience of REGN's investigational MUC16 targeting therapies in ovarian cancer to develop best-in-class cell therapy
- Potential 2023 IND

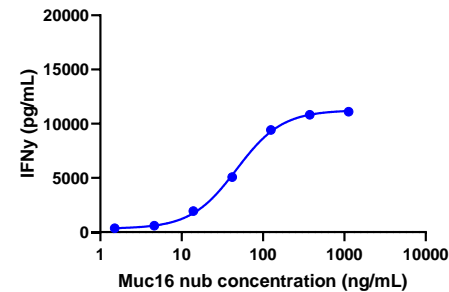
# Ovarian Cancer [DEVISE]: Pre-clinical data demonstrate deep responses



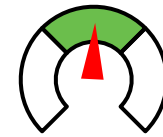
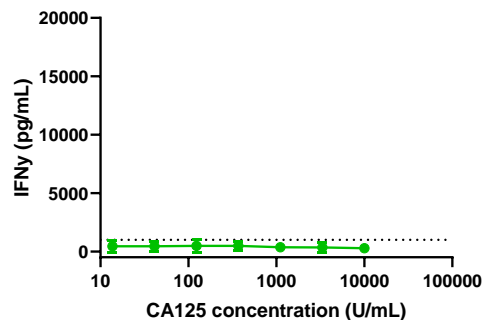
MUC16 CAR exhibits MUC16 ectodomain (“nub”) specificity – does not bind shed CA125

## Solution

CAR  
vs “nub”  
[surface retained]



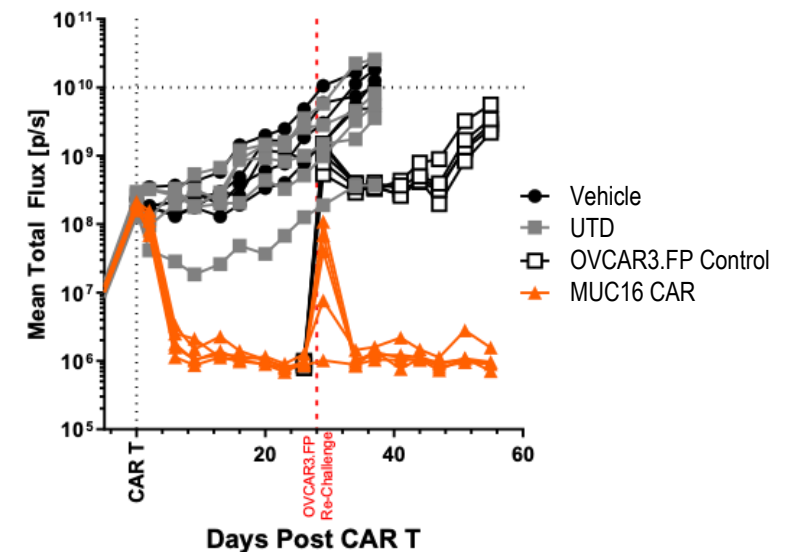
CAR  
vs CA125  
[shed]



MUC16 CAR shows robust single agent activity in tumor rechallenge model

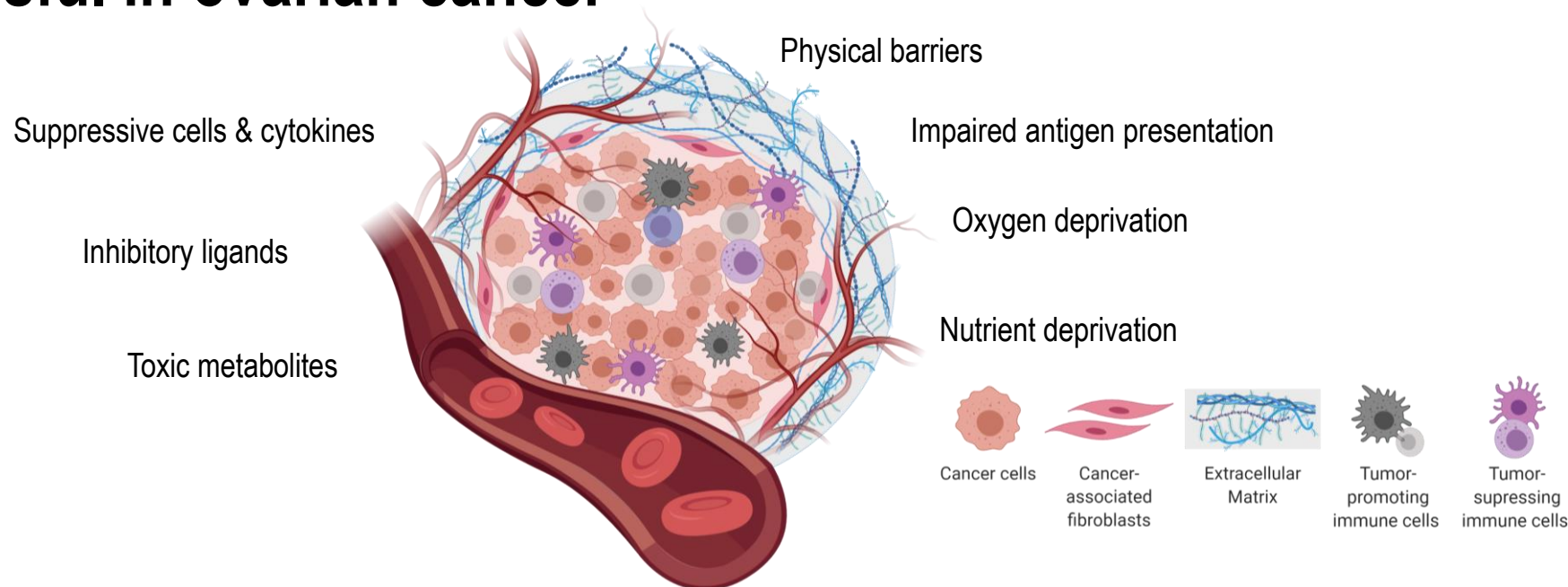
## Solution

OVCAR3 Ovarian Cancer Xenograft Model



Our MUC16 CAR T provides in vivo tumor clearance and can prevent re-growth in a stringent tumor rechallenge model

# A MUC16 CAR T cell therapy must overcome several challenges to be successful in ovarian cancer



## Key challenges

- ❑ Hostile/immunosuppressive tumor microenvironment (TME)
- ❑ Target expression heterogeneity and antigen negative relapse
- ❑ T cell expansion, persistence & penetration
- ❑ Healthy tissue liabilities

## Potential Solutions

- ✓ Immune checkpoint neutralization, e.g., PD1
- ✓ Oncolytic virus-induction of an inflamed TME
- ✓ Costimulatory enhancement of CAR activity in combo with CD28 bispecifics
- ✓ Titratable enhancement tools engaging orthogonal targets

# Our MUC16 program realizes the scientific power of collaboration with Regeneron

## MUC16 Know-how

*Mouse models, huAbs & pre-clinical data*

 **VELOCIMOUSE®**

Humanized mouse models

 **VELOCIMMUNE®**

Fully human antibodies

SCIENCE TRANSLATIONAL MEDICINE | RESEARCH ARTICLE

### CANCER

#### A Mucin 16 bispecific T cell-engaging antibody for the treatment of ovarian cancer

Alison Crawford\*, Lauric Haber, Marcus P. Kelly, Kristin Vazzana, Lauren Canova, Priyanka Ram, Arpita Pawashe, Jennifer Finney, Sumreen Jalal, Danica Chiu, Curtis A. Colleton, Elena Garnova, Sosina Makonnen, Carlos Hickey, Pamela Krueger, Frank DelFino, Terra Potocky, Jessica Kuhnert, Stephen Godin, Marc W. Retter, Paurene Duramad, Douglas MacDonald, William C. Olson, Jeanette Fairhurst, Tammy Huang, Joel Martin, John C. Lin, Eric Smith, Gavin Thurston, Jessica R. Kirshner

SCIENCE TRANSLATIONAL MEDICINE Jun 2019

## Novel Co-stimulatory Bi-specific Combinations

*Tumor targeted co-stimulation*

Multiple CD28 bispecifics in pre-clinical and clinical development

SCIENCE TRANSLATIONAL MEDICINE | RESEARCH ARTICLE

### CANCER

#### A class of costimulatory CD28-bispecific antibodies that enhance the antitumor activity of CD3-bispecific antibodies

Dimitris Skokos\*, Janelle C. Waite, Lauric Haber, Allison Crawford, Aynur Hermann, Erica Ullman, Rabi Slim, Stephen Godin, Dharani Ajithdoss, Xuan Ye, Bei Wang, Qi Wu, Ilyssa Ramos, Arpita Pawashe, Lauren Canova, Kristin Vazzana, Priyanka Ram, Evan Herlihy, Hassan Ahmed, Erin Oswald, Jacquelyn Golubov, Patrick Poon, Lauren Havel, Danica Chiu, Miguel Lazo, Kathleen Provoncha, Kevin Yu, Julie Kim, Jacqueline J. Warsaw, Nicole Stokes Oristian, Chia-Jen Siao, Drew Dudgeon, Tammy Huang, Terra Potocky, Joel Martin, Douglas MacDonald, Adelekan Oyejide, Ashique Rafique, William Poueymirou, Jessica R. Kirshner, Eric Smith, William Olson, John Lin, Gavin Thurston, Matthew A. Sleeman, Andrew J. Murphy, George D. Yancopoulos

Copyright © 2020  
The Authors, some  
rights reserved;  
exclusive licensee:  
American Association  
for the Advancement  
of Science. No claim  
to original U.S.  
Government Works

SCIENCE TRANSLATIONAL MEDICINE Jan 2020

## Checkpoint Inhibitor Combinations

*PD-1 inhibitor demonstrating promising results in solid tumors*

**CEMIPLIMAB®**  
**PD-1 Antibody**

Plus novel CPIs in development

MOLECULAR CANCER  
THERAPEUTICS

Home About Articles First Disclosures For Authors Alerts News COVID-19 Webinars Search Q

Large Molecule Therapeutics

Predclinical Development of the Anti-LAG-3 Antibody REGN3767: Characterization and Activity in Combination with the Anti-PD-1 Antibody Cemiplimab in Human PD-1xLAG-3-Knockin Mice

Elena Burova, Aynur Hermann, Jie Dai, Erica Ullman, Gabor Halasz, Terra Potocky, Seongwon Hong, Matt Liu, Omaira Albritton, Amy Woodruff, Jerry Pei, Ashique Rafique, William Poueymirou, Joel Martin, Douglas MacDonald, William C. Olson, Andrew Murphy, Ella Ioffe, Gavin Thurston, and Markus Mohr


DOI: 10.1158/1535-7163.MCT-18-1376 Published November 2019 [Check for updates](#)

MOL. CANCER THERAPEUTICS. Nov 2019

Robust toolbox with the potential to unlock deep responses in Ovarian Cancer



# Innovative cell therapy candidates across broad indications

INDICATION [DRUG]	TARGET	TECHNOLOGY	DISCOVERY STAGE R&D	IND-ENABLING PRECLIN. STUDIES	CLINICAL STUDIES	APPROVED PRODUCTS
Multiple Myeloma [ABECMA]	BCMA	CAR T cell	<div>BMS Partnership</div> <div></div>			
Multiple Myeloma [ABECMA]	BCMA	CAR T cell	<div>BMS Partnership; Earlier-line Studies</div>		Label Expansion	
AML-Pediatric [DARIC33]	CD33	Drug-Regulated CAR T cell (DARIC)	<div>SCRI Collaboration</div>		Phase 1 Open	
B-NHL [bbT369]	Dual B cell targets	Dual-Targeted CAR T cell Signal Enhanced Gene Edited	<div>TSVT Owned</div>		Phase 1 Open	
AML-Adult [DARIC33 Next-Gen]	CD33 + Undisclosed	Drug-Regulated CAR T cell Dual- Targeted Potency Enhanced	<div>SCRI Collaboration</div>			
Ovarian Cancer [bbT4015]	MUC16	CAR T cell Pharmacologic Enhancements	<div>REGN Collaboration</div>		2023 IND Submission	
Solid Tumors	MAGE-A4	TCR T cell Potency Enhanced	<div>REGN / MEDG Collaboration</div>		<div></div> <div>Product engine generating ~1+ INDs per year</div>	
Solid Tumors	Multiple	CAR / TCR T cell Potency Enhanced	<div>Multiple</div>			
Multiple Myeloma	Multiple	Multi-Targeted CAR T cell Potency Enhanced	<div>TSVT Owned</div>			
Additional Indications	Undisclosed	Multiple	<div>Multiple; Including Collab. with Novo Nordisk</div>			

# Horizons focused on long term learning and disruption





# What are the biological barriers to achieving deep and durable responses?

*Low or reduced target abundance*

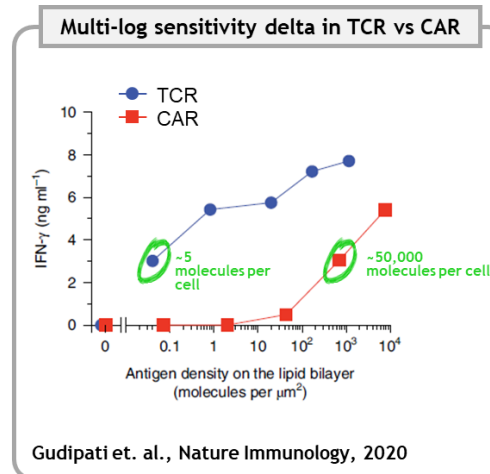
*Target loss & heterogeneous expression*

*Poor T cell engraftment and persistence*

*Immunosuppressive microenvironment*

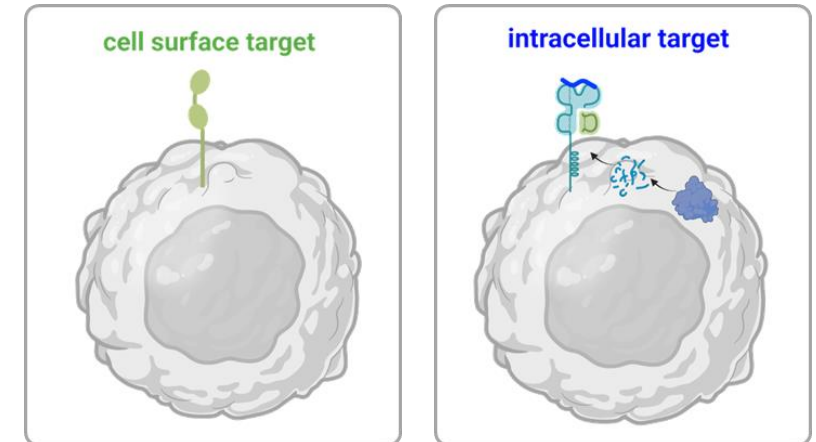
*Cancer immune cycle breakdown*

**TCRs >> CARs**



**Need to improve  
sensitivity**

**TARGET CLASS**



**Need to multiplex across  
target classes**

# 2seventy's novel receptor architecture: a new platform for tumor targeting

*We have overhauled antigen receptor design and significantly advanced our targeting capabilities...*

An orthogonal approach to improved T cell signaling and tumor target engagement

- TCRs have 2- to 3-log higher sensitivity to antigen density
- New architecture achieves TCR-like sensitivity to surface expressed antigens
  - May deepen responses in hematological tumors
  - May improve functional T cell responses in solid tumors

Enables simultaneous targeting of BOTH cell surface AND intracellular targets

- New architecture enables facile targeting of both target classes
- For solid tumor targets in particular
  - Targets are limiting
  - They are heterogeneous in expression level and heterogeneous in expression pattern

Compact, readily engineered, and vectorized facilitating rapid adoption

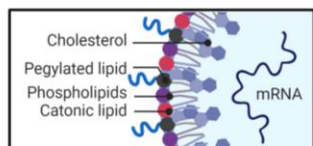
- Constructs are compact, readily engineered and vectorized
- New receptor architecture is compatible with 2seventy bio's binder and platform technologies

# F8-GE: Novo Nordisk Partnered Program to Leverage Gene Editing Capabilities Directly in vivo for Durable Hemophilia A Gene Therapy

## HemeA

### Lipid nanoparticle (LNP)

megaTAL mRNA  
5' G——megaTAL ORF—AAAAAA 3'



### Adeno-associated virus (AAV)

Therapeutic transgene



### TARGET(S)

Endogenous gene promoter trap knock-in of F8 transgene

### TECH

- TSVT megaTAL gene edit
- TSVT in vivo grade mRNA production / purification platform
- AAV for transgene delivery
- Genevant LNPs for hepatocyte delivery

### INDICATION

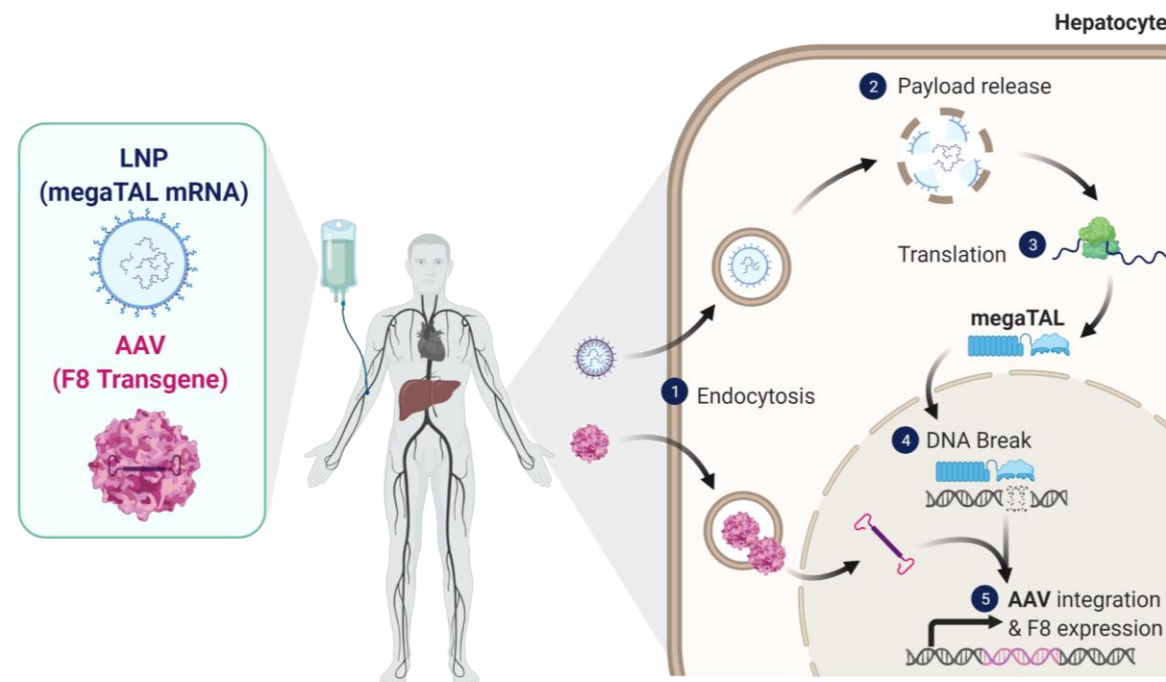
Hemophilia A

### STATUS

Pre-clinical

### PARTNER

Novo Nordisk, Genevant



- Direct in-vivo application of megaTAL technology using TSVT developed in vivo grade mRNA production/purification process
- Recent expansion of collaboration with Novo Nordisk including \$5M upfront + research costs, \$35M of available near-term milestones + downstream sales royalties/milestones.
- Validates megaTAL platform and provides support for further expansion into ex-vivo and in vivo applications within the oncology portfolio

# 2seventy's manufacturing network: Poised to deliver

## VELOCITY

Enable pipeline speed & decision making to proof-of-concept

Secure best-in-class academic partnerships for exploratory programs

- Outlets for high-risk programs for clinical validation while preserving flexibility & 2seventy resources
- Access to external innovation and programs, network

## INNOVATION

Multiply our reach, capacity & ability to innovate

Establish an in-house clinical drug product manufacturing facility in Cambridge, MA

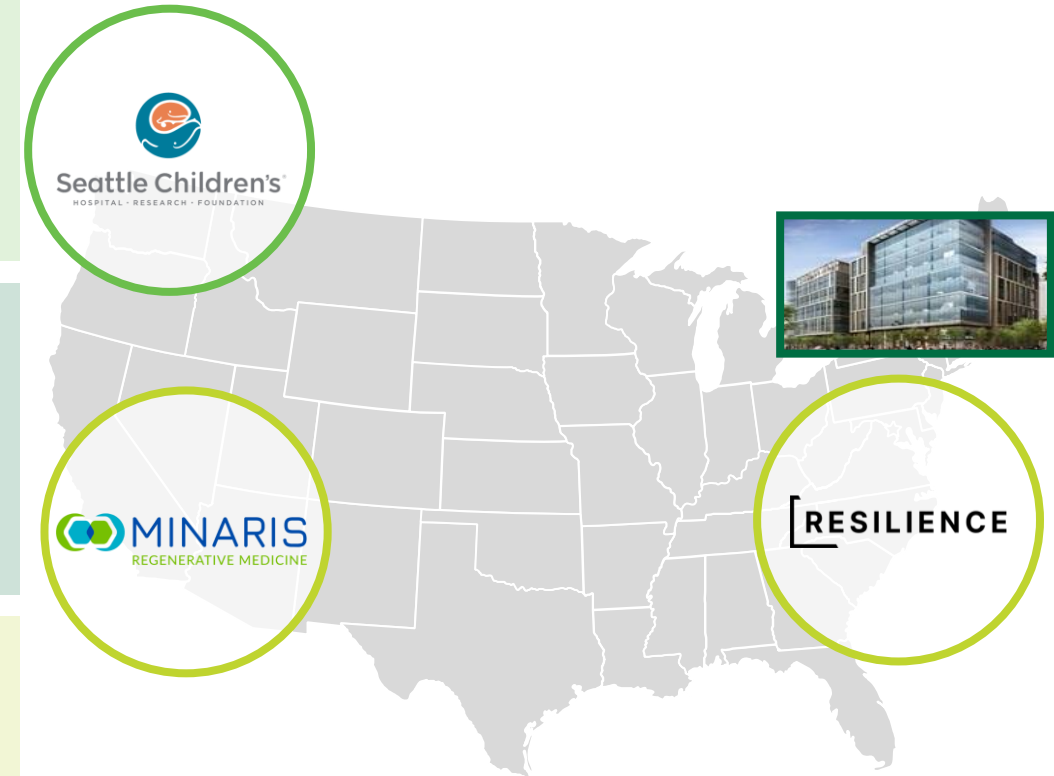
- Aimed to ensure ownership of the process, analytics, execution, value creation
- Enables deep integration of CMC with research and correlative sciences plus, flexibility to iterate

## CAPABILITY

Manufacturing partnerships defined by identical goals

Leverage industry partnerships

- Risk-reward partnership with Resilience- new model for access to CDMO capabilities, aligning incentives & promoting agility



# Our seasoned team is ready

## Leadership



**Nick Leschly**  
Chief Kairos Officer\*



**Chip Baird**  
Chief Financial Officer



**Nicola Heffron**  
Chief Operating Officer



**Philip Gregory, D. Phil.**  
Chief Scientific Officer



**Kathy Wilkinson**  
Head of People & Culture



**Steve Bernstein, M.D.**  
Chief Medical Officer



**Susan Abu-Absi, Ph.D.**  
Head of Manufacturing



**Jenn Snyder**  
Head of Corporate Affairs



**Teresa Jurgensen, J.D.**  
General Counsel



**Kathleen Munster**  
SVP, Quality & Operations

## Board of Directors



**Sarah Glickman**  
Criteo



**Ramy Ibrahim, M.D.**  
BIT.BIO



**Michael Jensen, M.D.\*\***  
Seattle Children's



**Nick Leschly**  
Chief Kairos Officer



**Dan Lynch**  
Board Chair



**Marcela Maus, M.D., Ph.D.**  
Massachusetts General Hospital  
(MGH) Cancer Center



**Denice Torres, J.D.**  
From Johnson & Johnson

+450 Awesome 270ers



# It's about time

The most committed and  
passionate geeks driving next gen  
oncology cell therapeutics



**thank you**